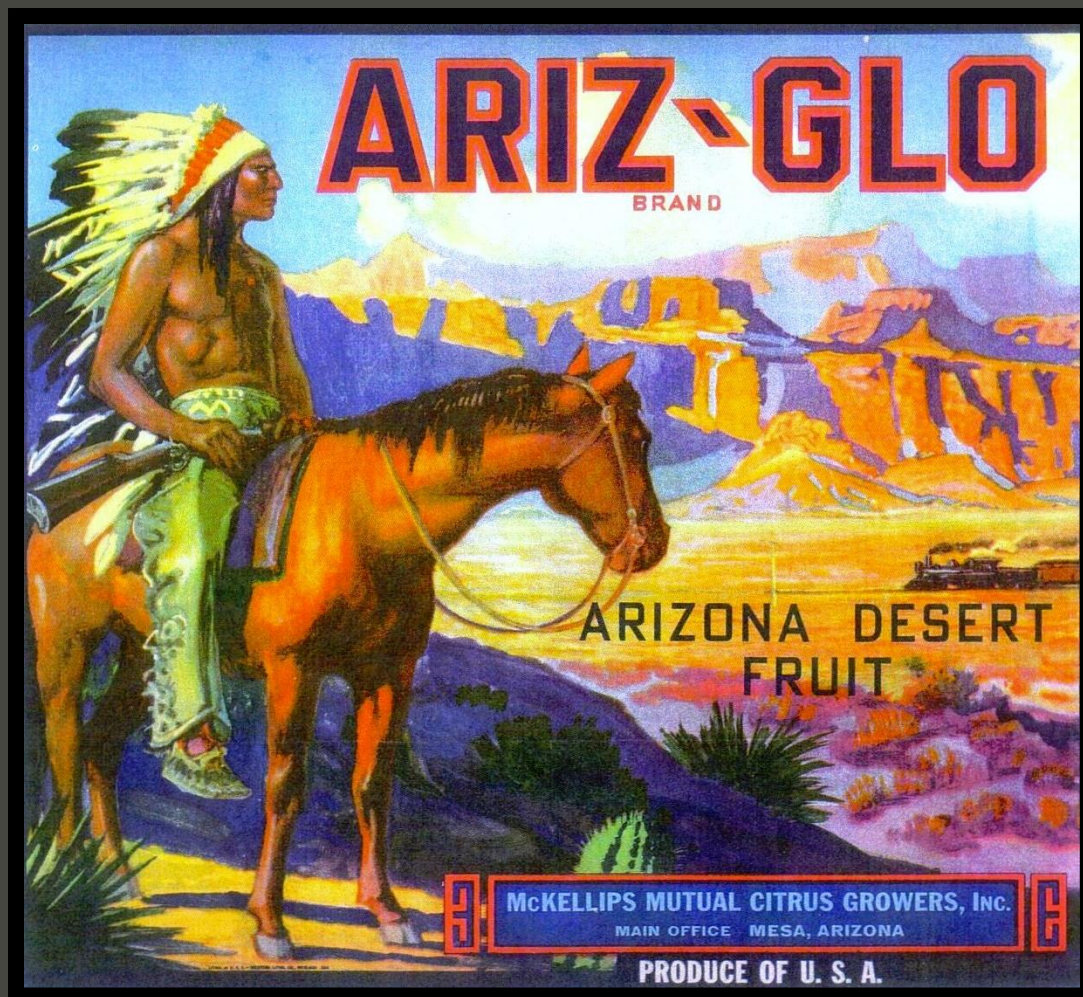


# *“Citrus & Saguaros”*

*An Illustrated History  
of  
Citrus in Arizona  
1888-1960*

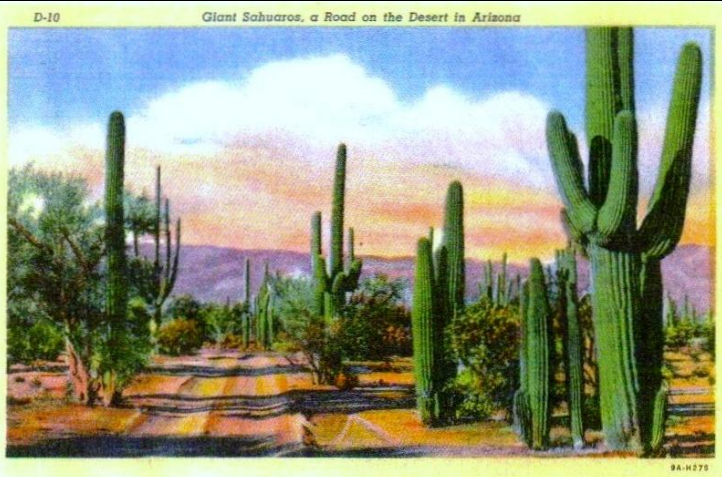
*by  
Royal John Medley*

*Ariz – Glo Brand  
McKellips Mutual  
Citrus Growers, Inc.  
Mesa, AZ*

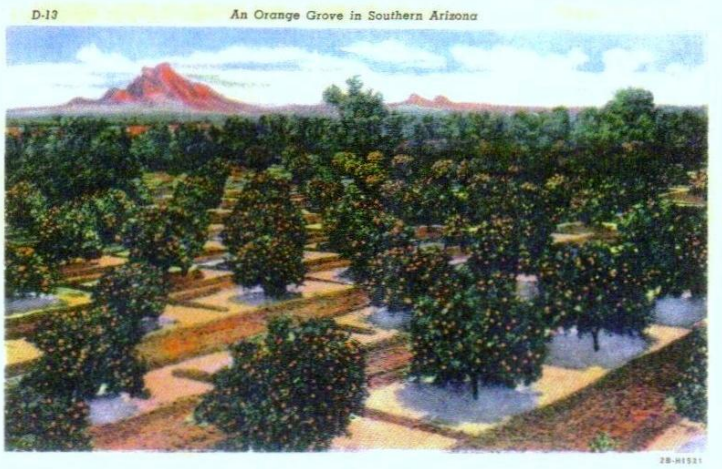


*All Contents & Intellectual Property; Copyright 2025 by Royal John Medley*

*Citrus and Saguaros  
Arizona Postcards  
(circa - 1940's)*

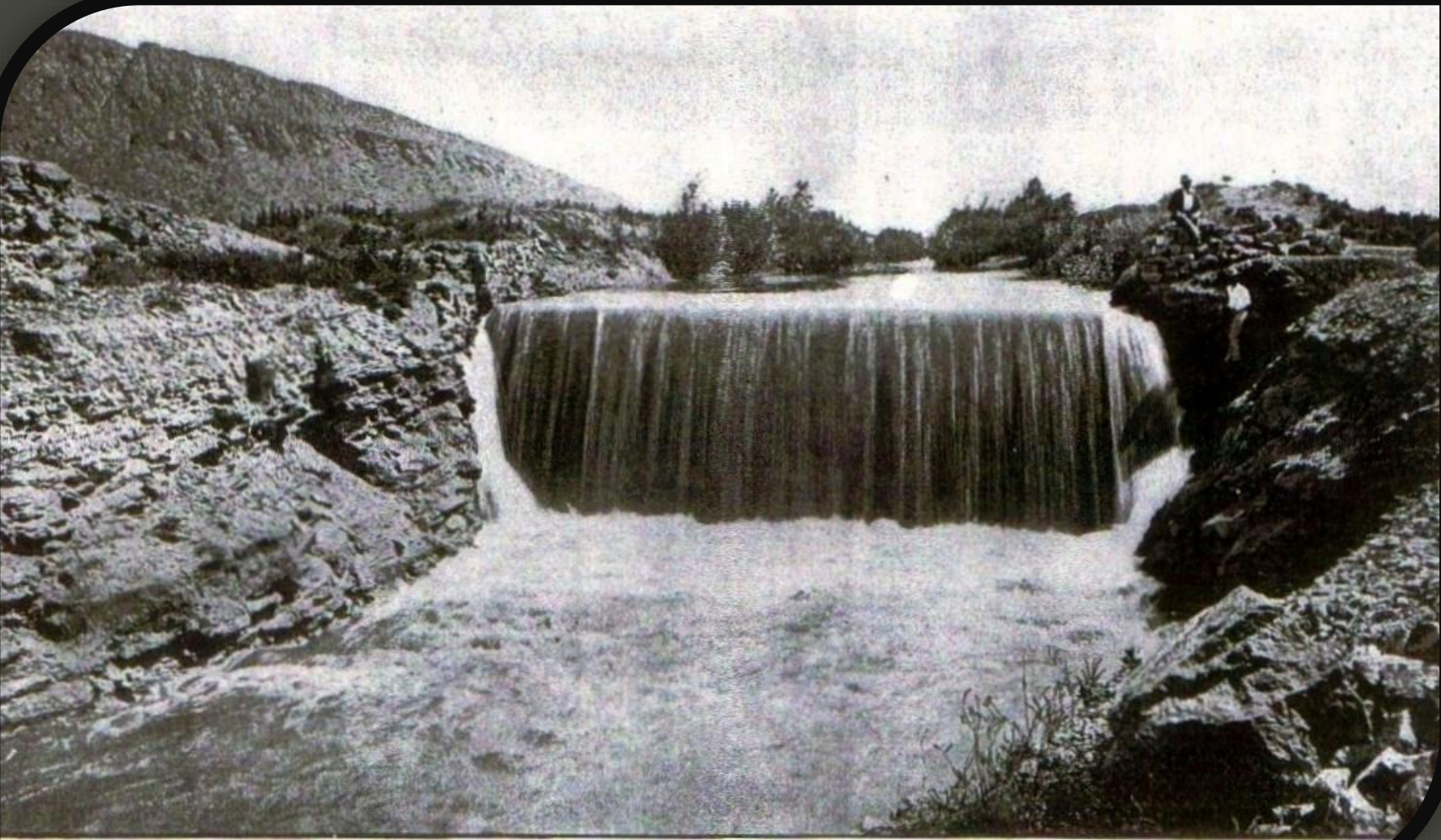


Giant Saguaros, a Road on the Desert in Arizona  
Published By Lollesgard Speciality Co.



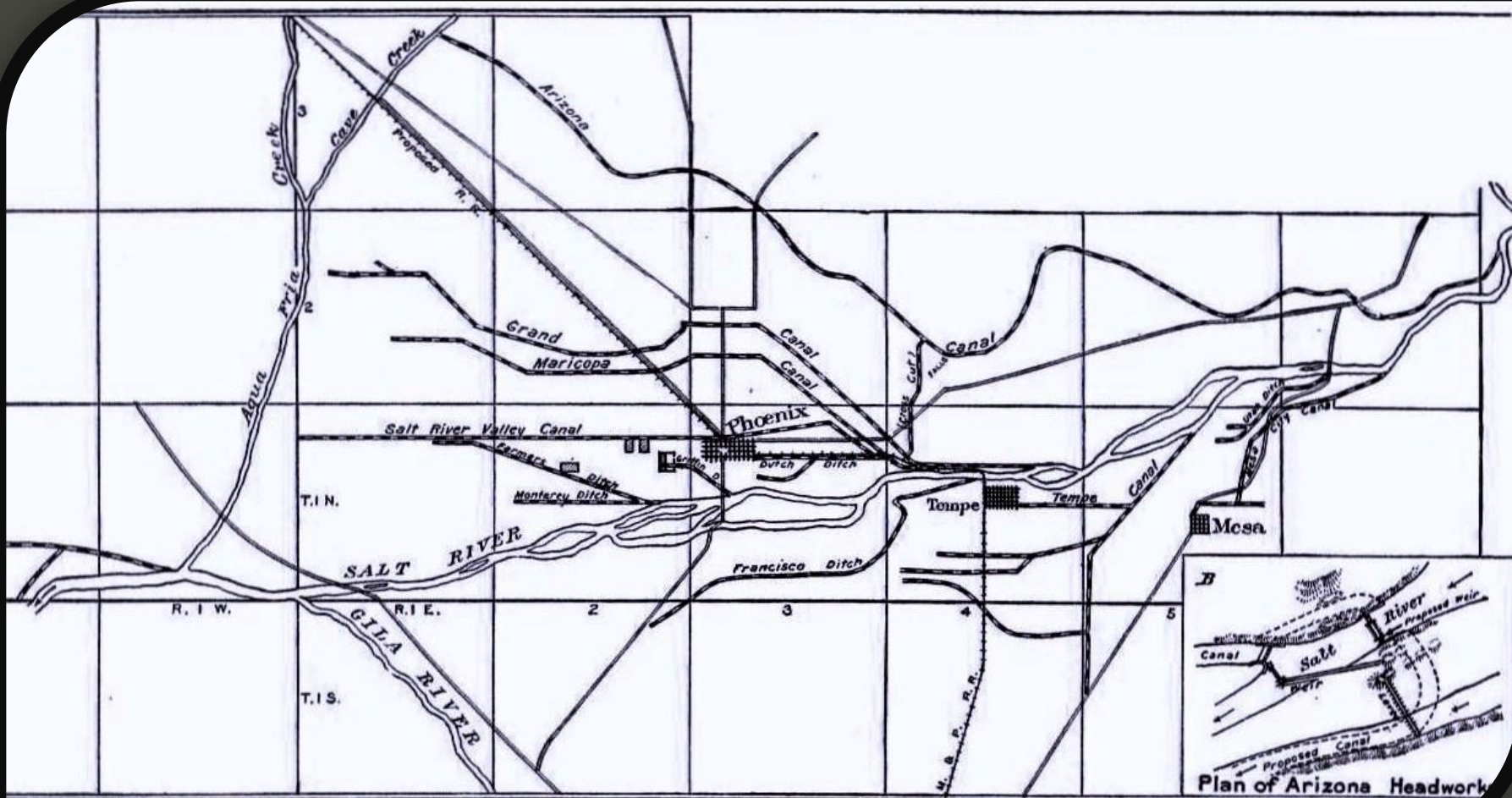
An Orange Grove in Southern Arizona  
Published by Lollesgard Speciality Co.

*The "Arizona Falls" of the Arizona Canal  
Builder; William J. Murphy for Arizona Canal Company  
Report of Secretary of Interior – (1892)*



ARIZONA CANAL. VIEW OF BIG FALL.

# Map of Salt River Canal System Featuring the Arizona Canal Report of Secretary of Interior – (1892)



ARIZONA CANAL SYSTEM, A, AND PLAN OF HEADWORKS, B.

*View of Ingleside Orchard near the Arizona Canal  
Planted by W. J. Murphy & the Arizona Improvement Company  
Photograph - (Circa - 1900's)*



*Improvement Co. Orange orchard near Old Camelto*

*Views of Ingleside Inn  
Built by W. J. Murphy  
Postcards (Circa - 1900's)*



Main Entrance, Ingleside Inn  
Phoenix, Ariz.  
The Albertype Company

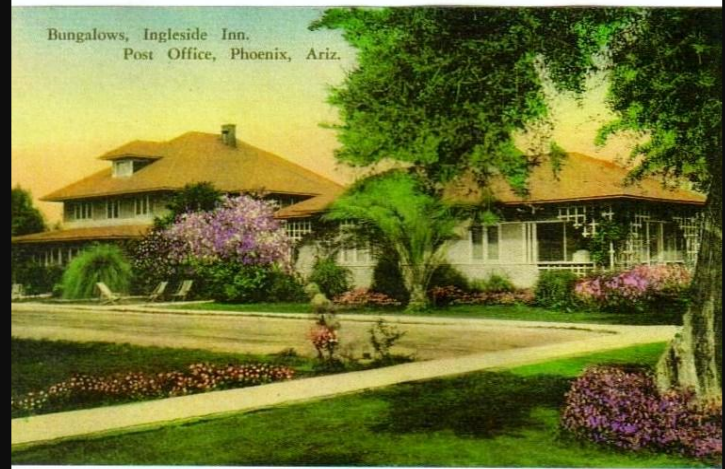


Ingleside Inn and Bungalows  
Phoenix, Ariz.  
The Albertype Company

*Views of Ingleside Inn  
 Built by W. J. Murphy  
 Postcards (Circa - 1900's)*

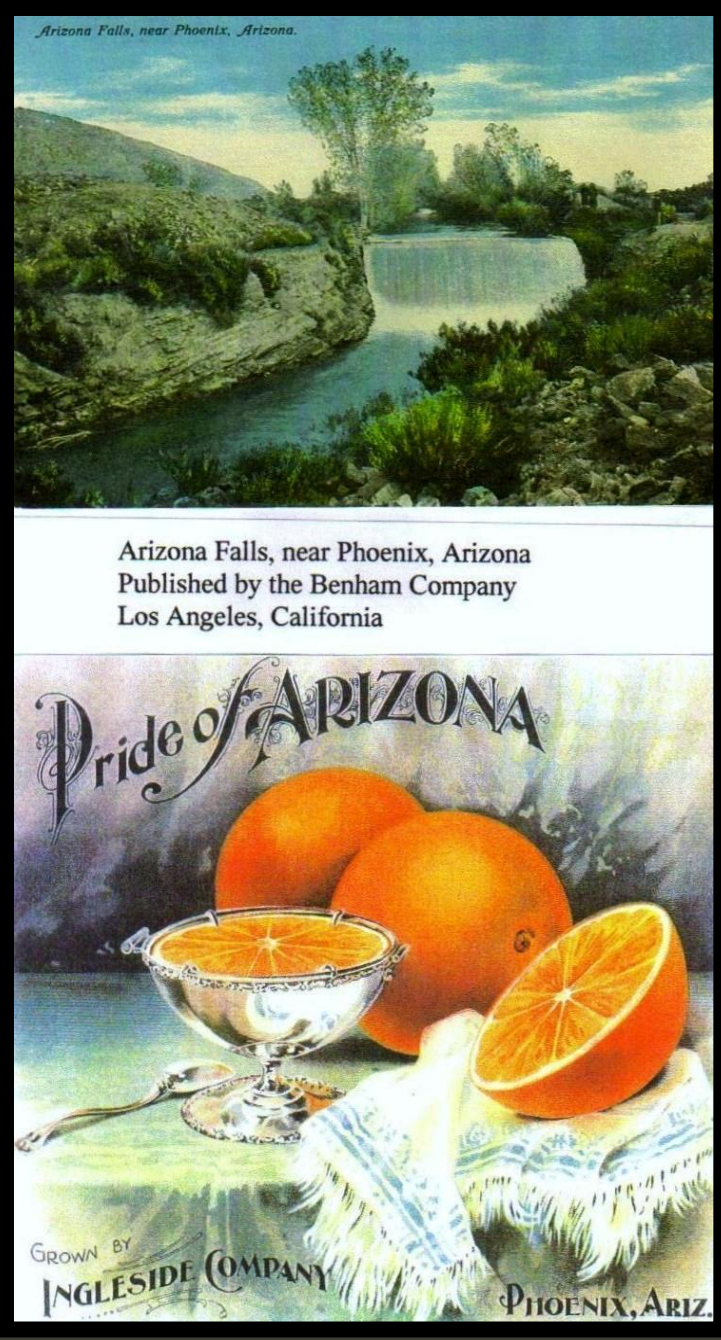


Ingleside Club near Phoenix, Ariz.  
 Miller Sterling Company  
 Phoenix, Ariz.

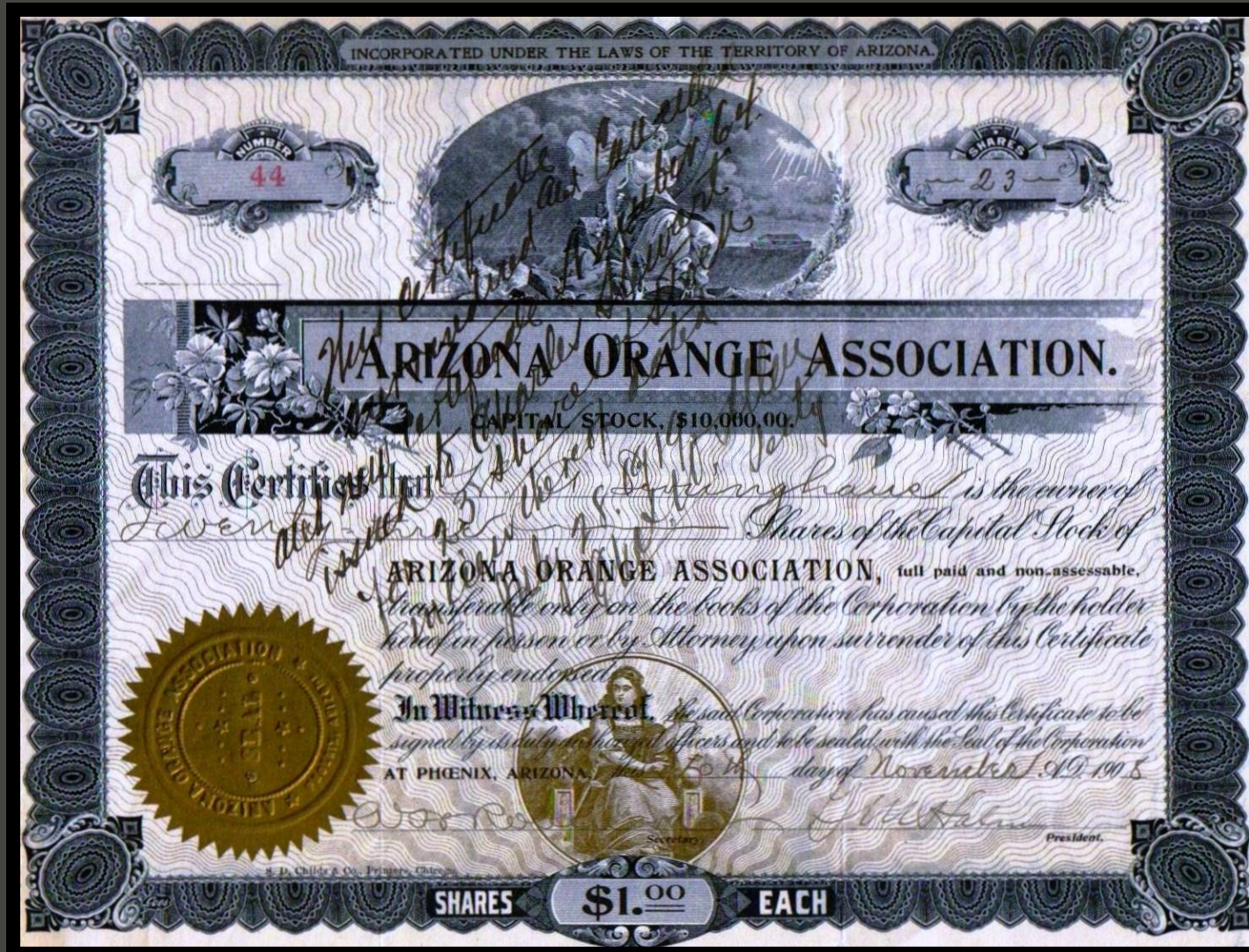


Bungalows, Ingleside Inn  
 Phoenix, Ariz.  
 The Albertype Company

***“Pride of Arizona” Brand  
by Ingleside Company  
(Circa - 1900’s)***



**“Arizona Orange Association”  
Territorial Stock Certificate  
(Issued – November, 1908)**



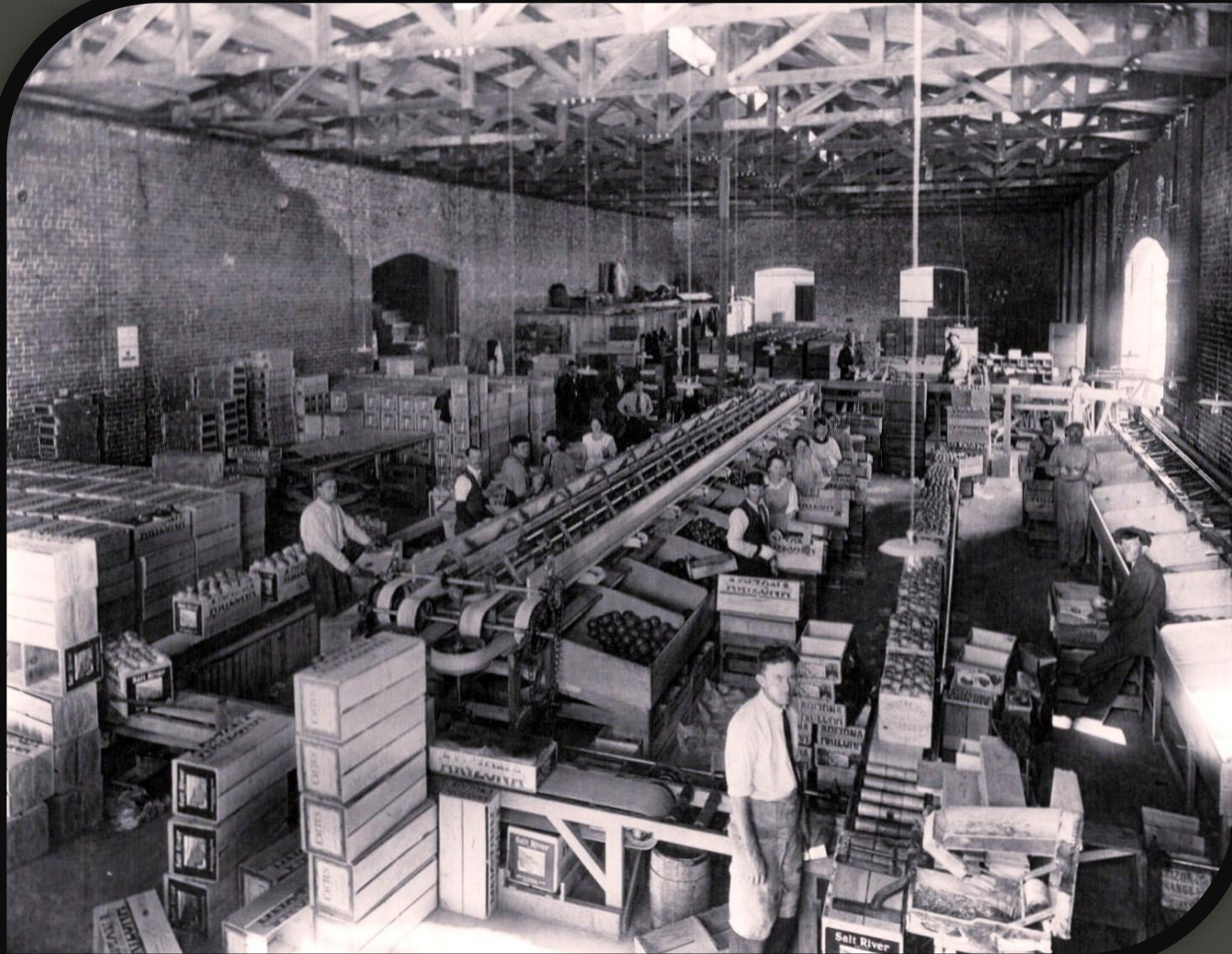
*Exterior - Arizona Orange Assn. Packing House  
with Ingleside wagon in center  
(Circa - 1900's)*



*Interior - Arizona Orange Assn. Packing House  
with Ingleside field boxes in center  
(Circa - 1900's)*



*Interior - Arizona Orange Assn. Packing House  
w/ crates of "SALT RIVER" Brand oranges in foreground  
(Circa - 1900's)*



*“Cactus” Brand  
By Arizona Orange Assn.  
(Circa - 1900’s)*



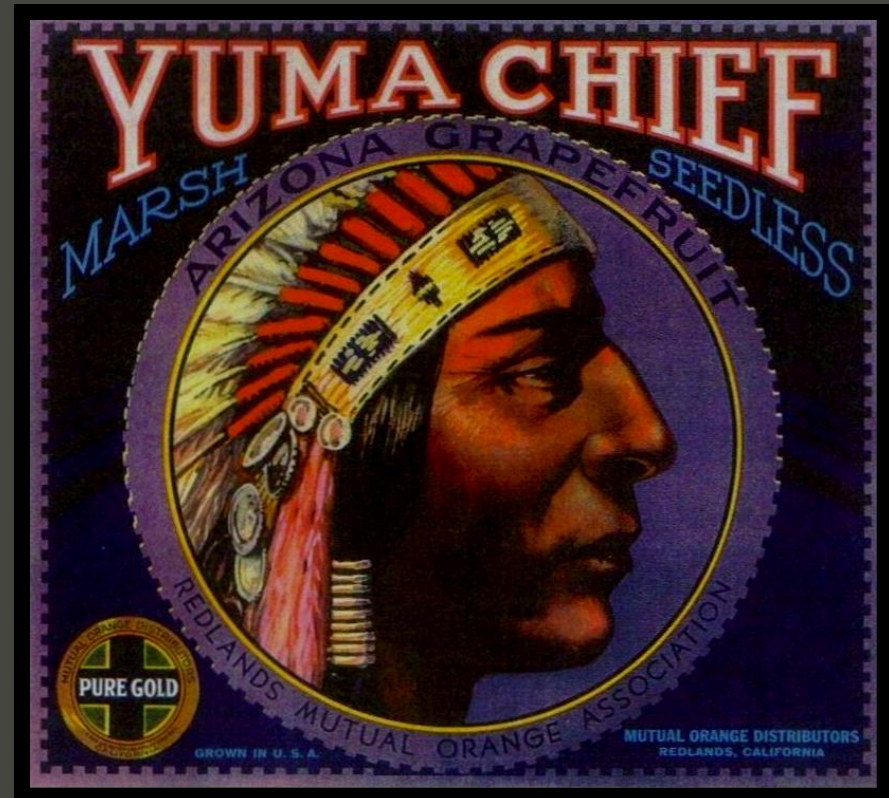
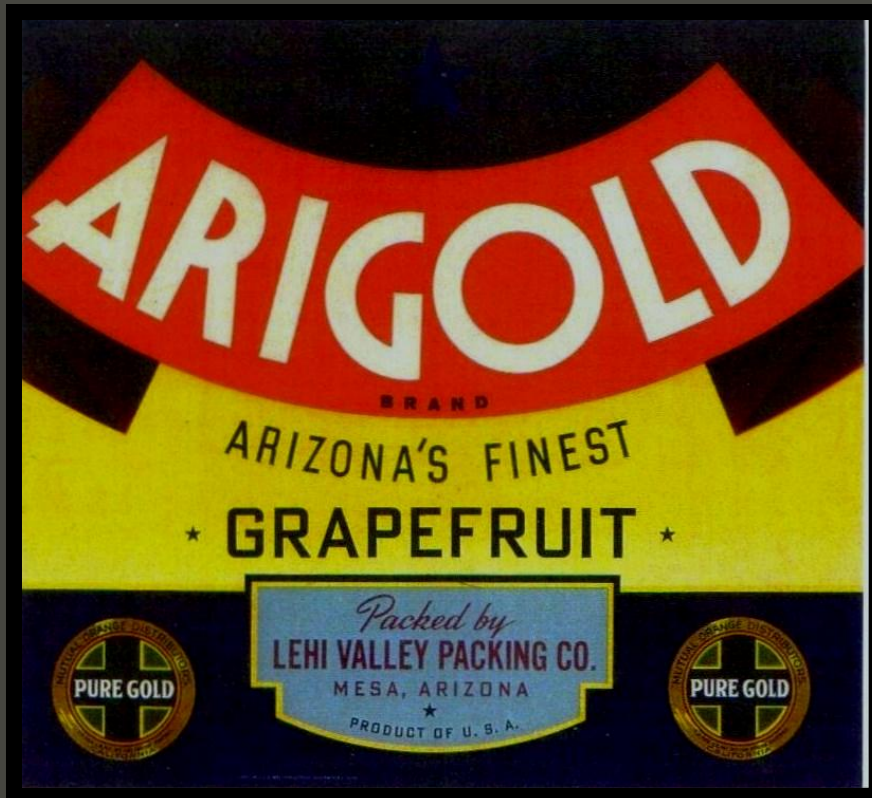
*“Desert” Brand*  
*By Arizona Orange Assn.*  
*(Circa - 1900’s)*



*Marketed By  
Mutual Orange Distributors  
w/ "Pure Gold" & "Silver Seal" Logos  
(Circa - 1920's)*



*Marketed By  
Mutual Oranges Distributors  
w/ "Pure Gold" Logos  
(Circa - 1930's/1940's)*



*Marketed By  
California Fruit Growers  
Exchange  
w/ "Sunkist" Logo's  
(Circa - 1930's/1940's)*



*Arizona Landmark Brand Circa 1930's  
Arizona Citrus Growers  
Phoenix, Arizona*

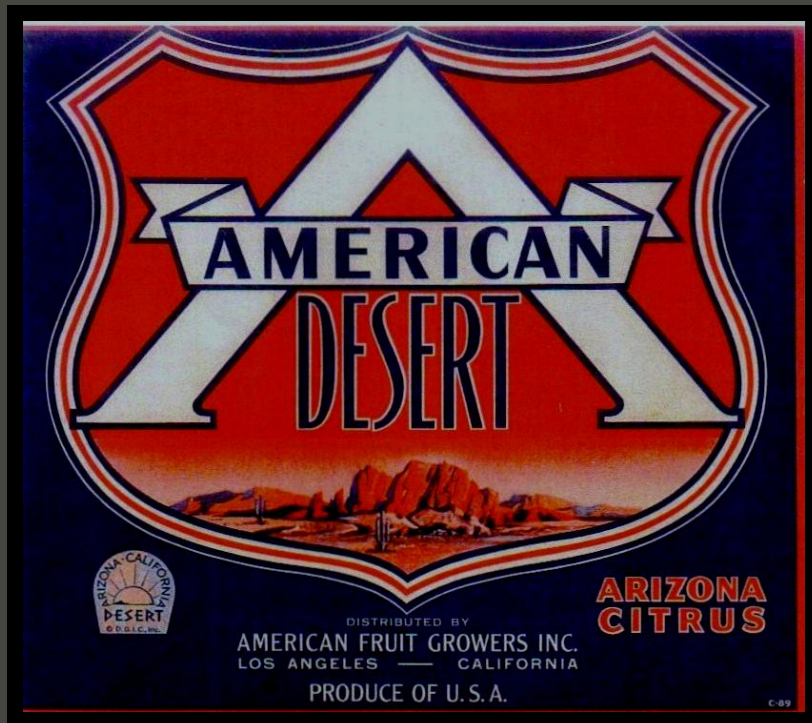


*Tempecco Groves Brand Circa 1940's  
Tempecco Groves  
Tempe, Arizona*

*“Desert Sweet” Brand Marketed By  
California Fruit Growers Exch.  
w/ “Sunkist” Logos  
(Circa -1930’s/1940’s)*



*“American Desert” & “Honeymoon” Brands Marketed By  
American Fruit Growers  
w/ “Blue Goose” Logo  
(Circa - 1930’s/1940’s)*

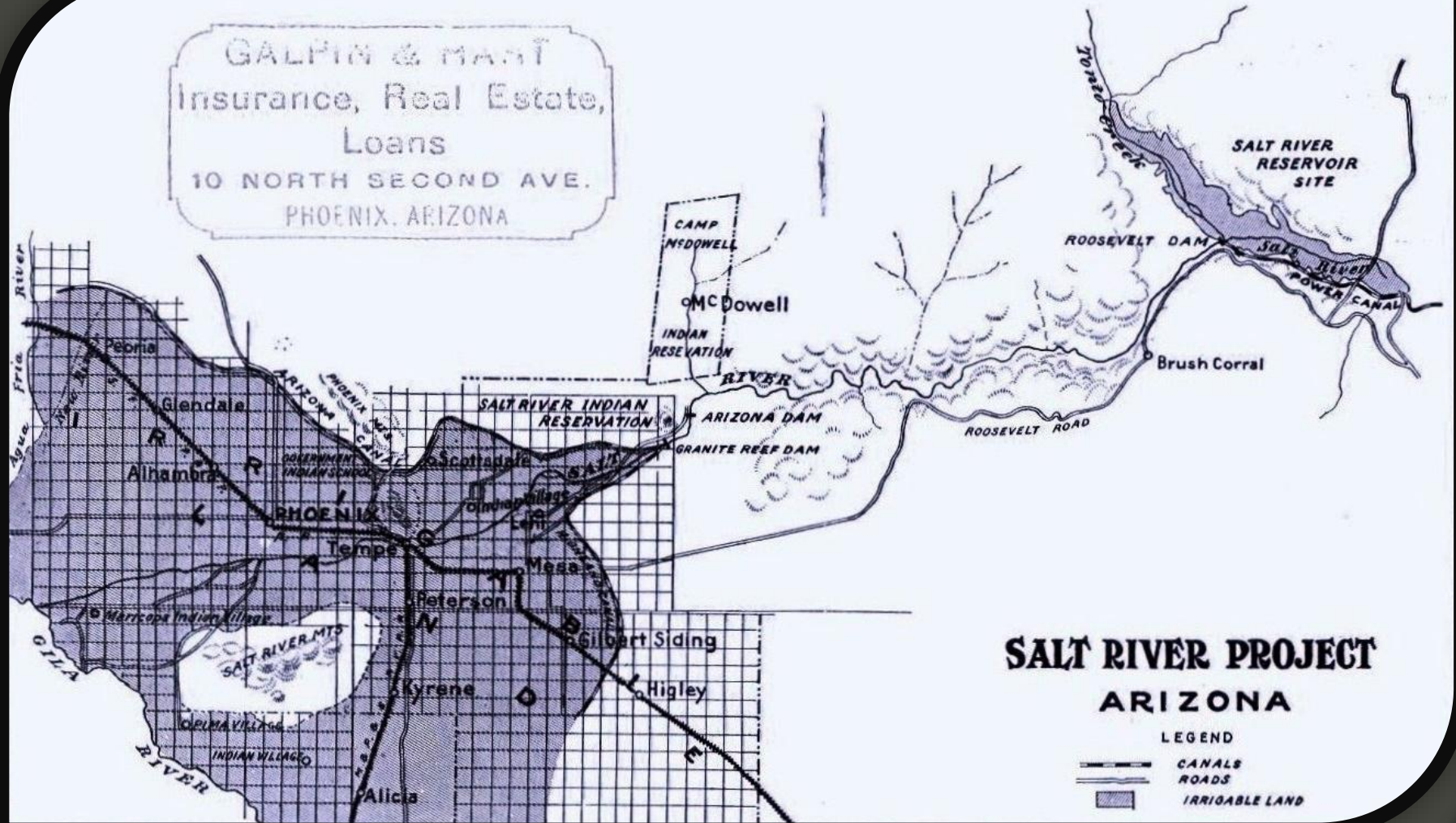


Marketed By  
 American Fruit Growers  
 "Blue Goose" Brand  
 With Inset of "Ariz-Glo" Brand and "Ariz-Sweet" Brand  
 (Circa - 1930's)

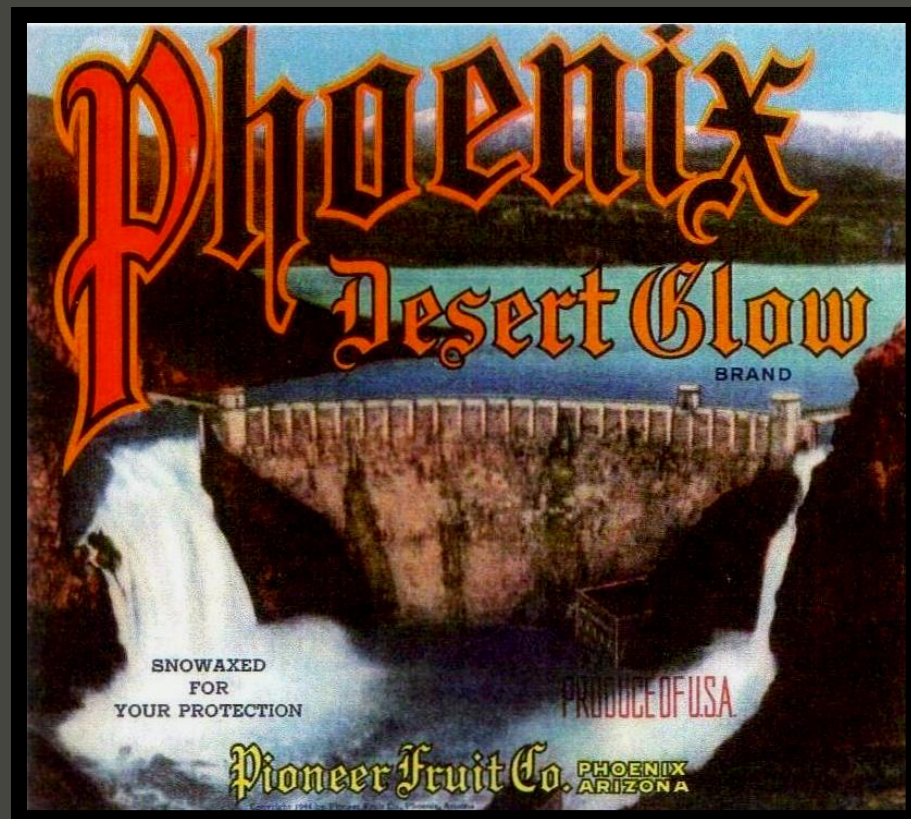


# Map of Salt River Project

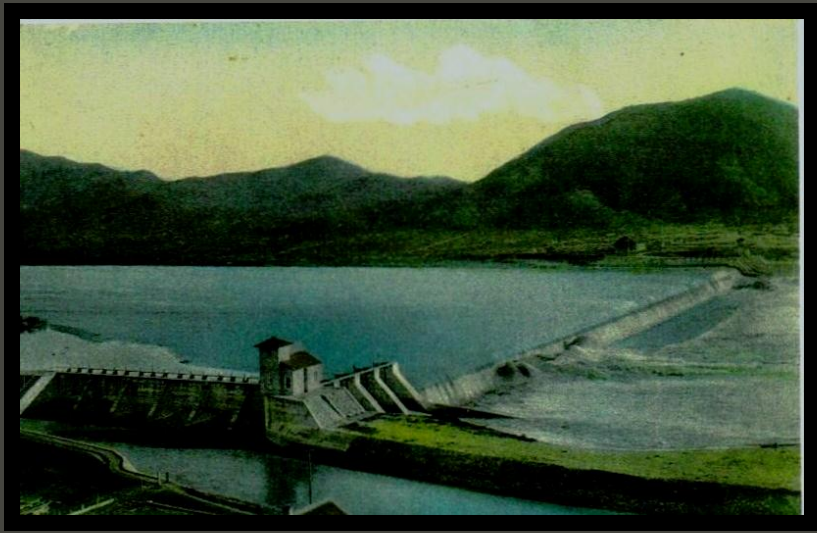
Issued by "Sunset Magazine" Home Seekers Bureau  
(Circa - 1910)



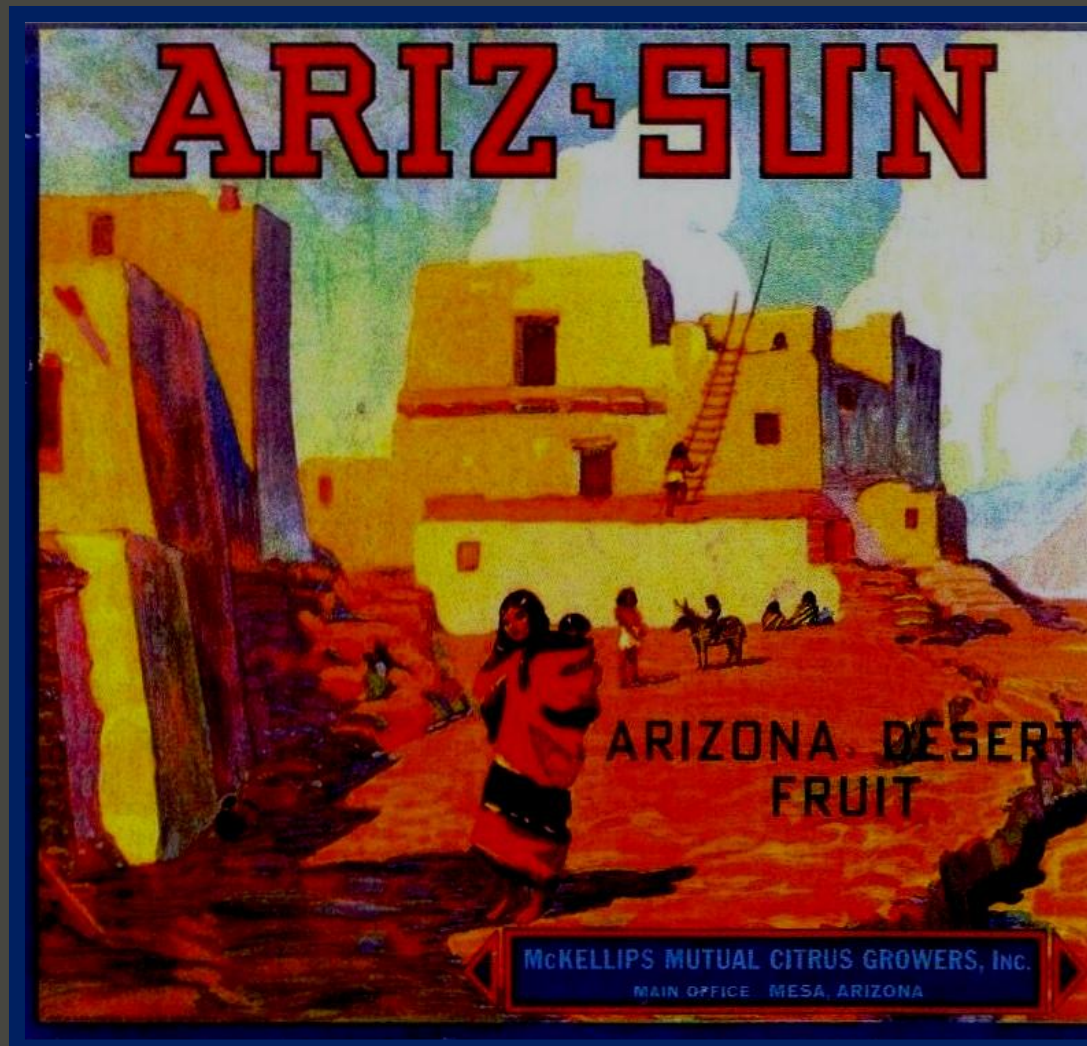
**Roosevelt Dam  
Salt River Project  
Phoenix "Desert Glow" Brand  
(Circa - 1940's)**



*Granite Reef Dam  
Salt River Project  
“Granite Reef” Brand  
(Circa - 1940’s)*



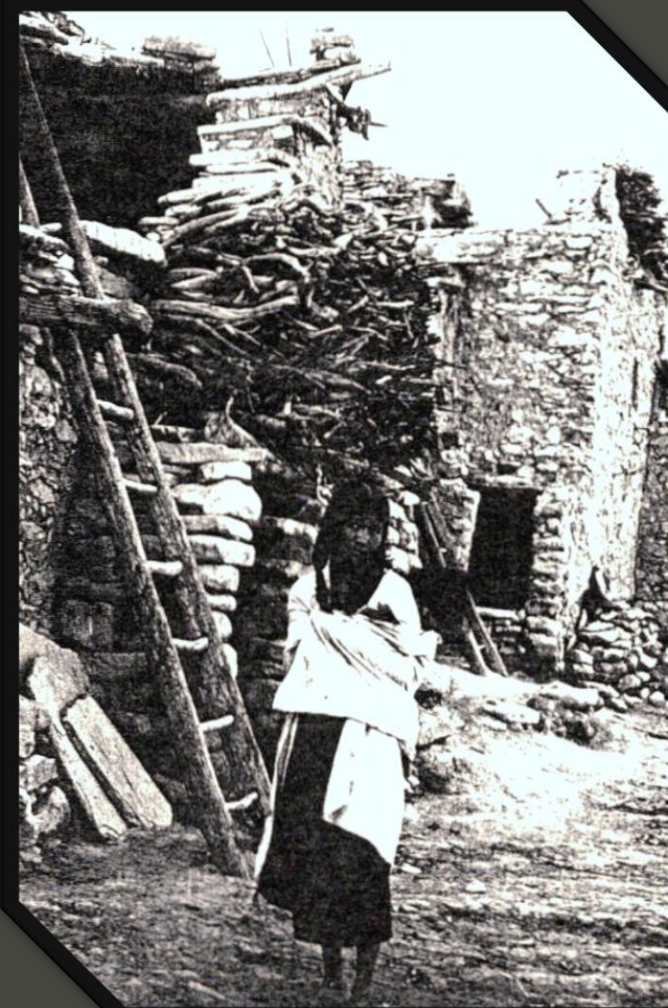
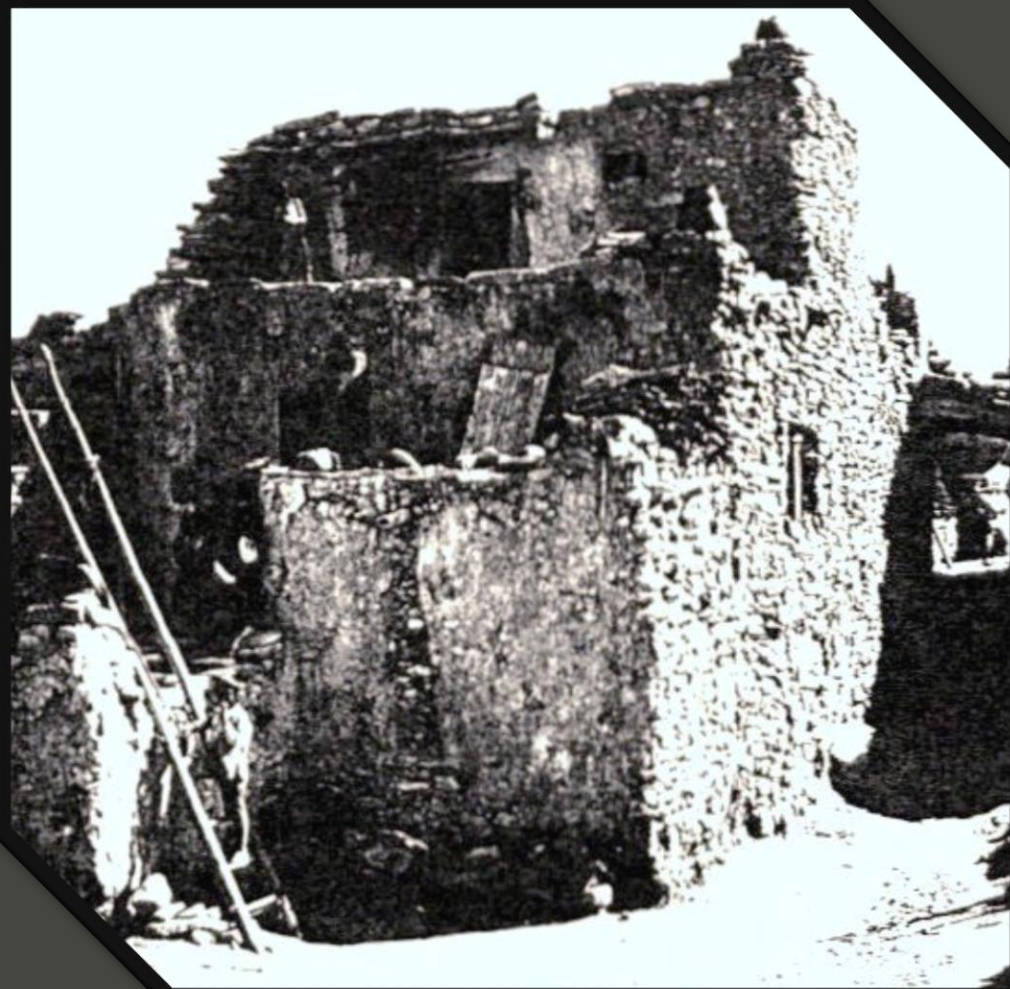
*“Ariz-Sun” Brand  
By McKellips Mutual Citrus Growers  
Printed by Western Lithograph Co.  
(Circa - 1930’s)*



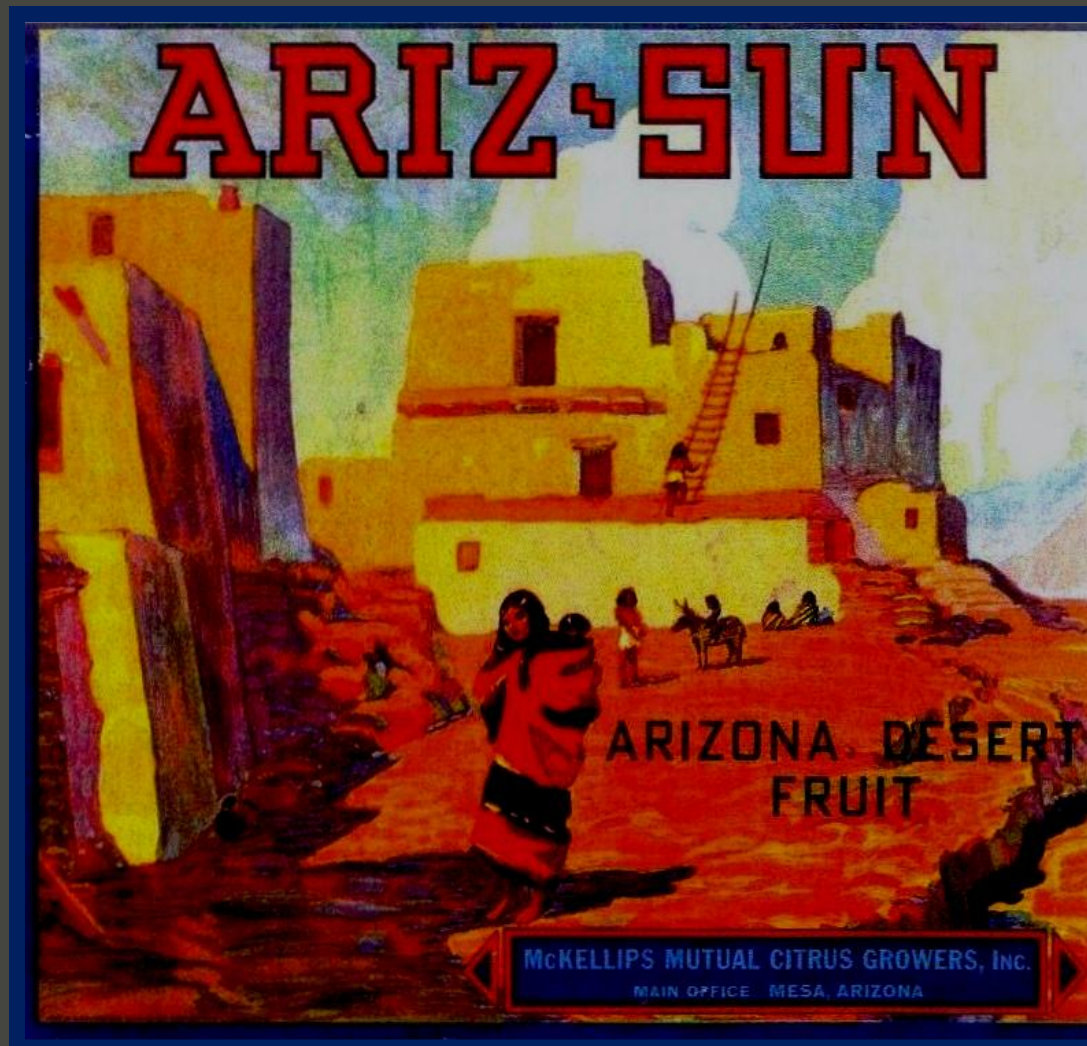
*A. C. Vroman Photographs – (Circa – 1890's)*

*On left – Hopi Pueblo “Walpi”*

*On right – Hopi Pueblo “Mishongnovi”*



*“Ariz-Sun” Brand  
By McKellips Mutual Citrus Growers  
Printed by Western Lithograph Co.  
(Circa - 1930’s)*



*"Arizona Sun-God" Brand  
By Southwest Fruit Growers  
Printed by Schmidt Lithograph Co.  
(Circa - 1930's)*



*Hopi Shields of the Sun God  
Hopi Pueblo Walpi  
By A. C. Vroman  
(Circa - 1900's)*



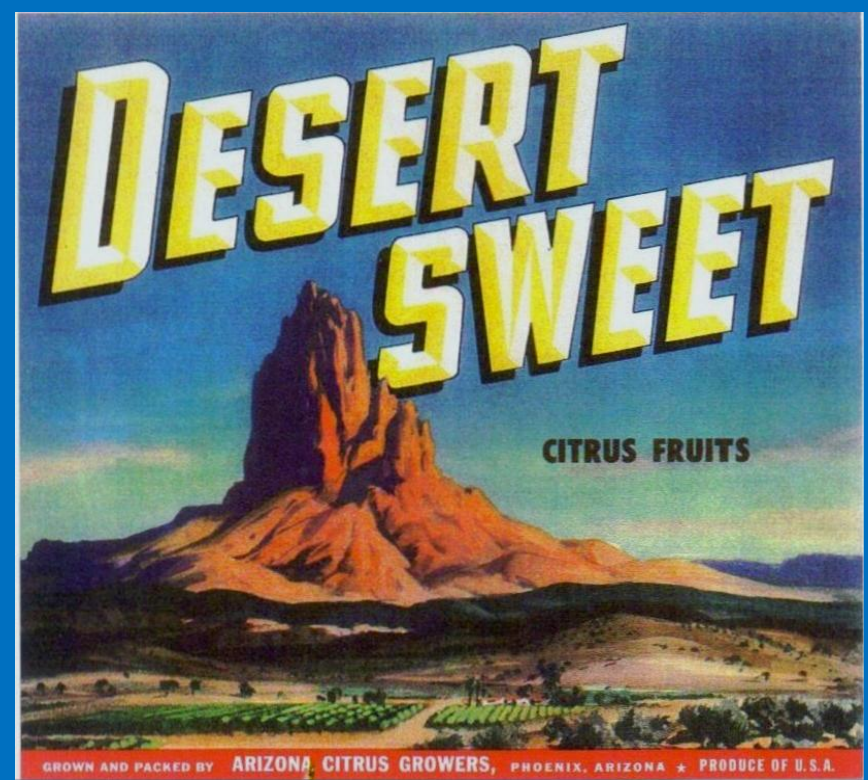
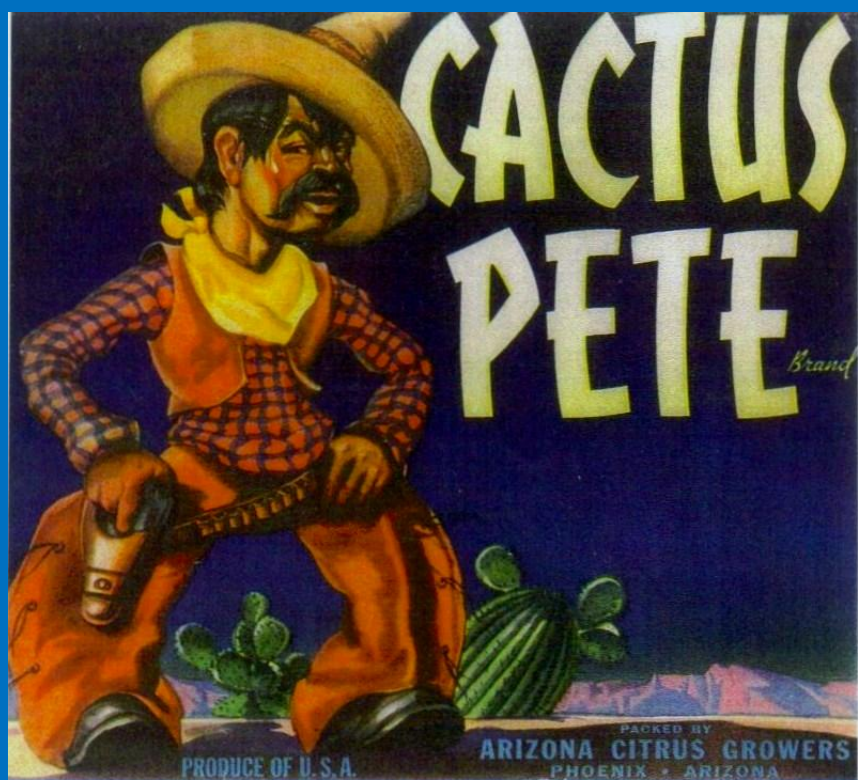
*"Arizona Sun-God" Brand  
By Southwest Fruit Growers  
Printed by Schmidt Lithograph Co.  
(Circa - 1930's)*



*Mrs. J. A. Darling's Groves - Chevrolet Truck  
w/ 165 field boxes for delivery to Arizona Citrus Growers  
Packing House – (Circa - 1930's)*



*“Cactus Pete” Brand  
“Desert Sweet” Brand  
By Arizona Citrus Growers Assn.  
(Circa - 1940’s/1950’s)*



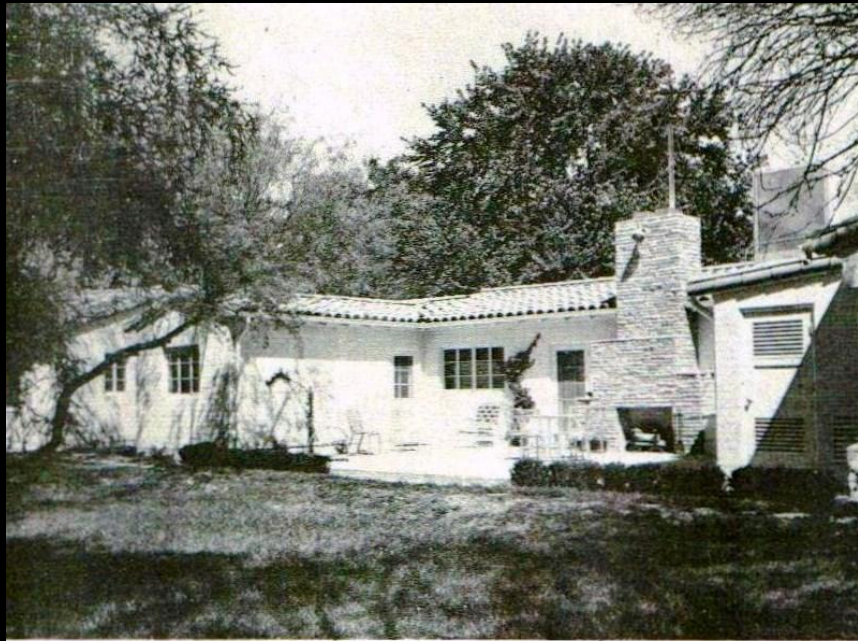
*“Sunnizone” Brand  
By Arizona Citrus Growers Assn.  
(Circa - 1930’s)*



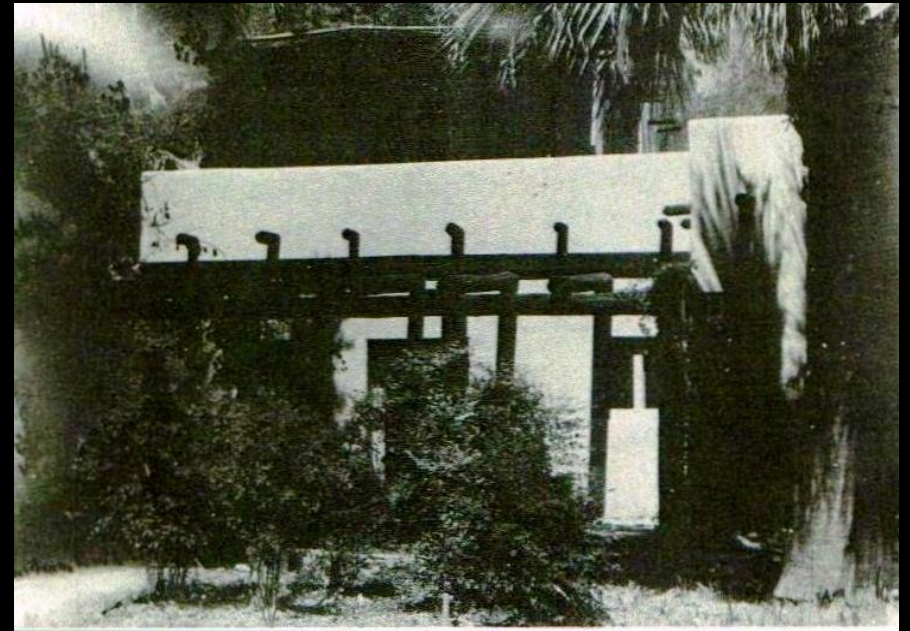
*“Landmark” Brand  
By Arizona Citrus Growers Assn.  
(Circa – 1940’s)*



*Dale Bumstead's Tal-Wi'-Wi' Ranch  
Peoria, Arizona - (Circa - 1950's)*



Residence of Owner; Dale Bumstead  
Tal-Wi-Wi Ranch  
Circa 1950's



Residence of General Manager; Kenneth T. McGeorge  
Tal-Wi-Wi Ranch  
Circa 1950's

*Dale Bumstead's Tal-Wi'-Wi' Ranch  
Peoria, Arizona - (Circa - 1950's)*



Residence and Offices of Superintendent; Harry Starr  
Tal-Wi-Wi Ranch  
Circa 1950's

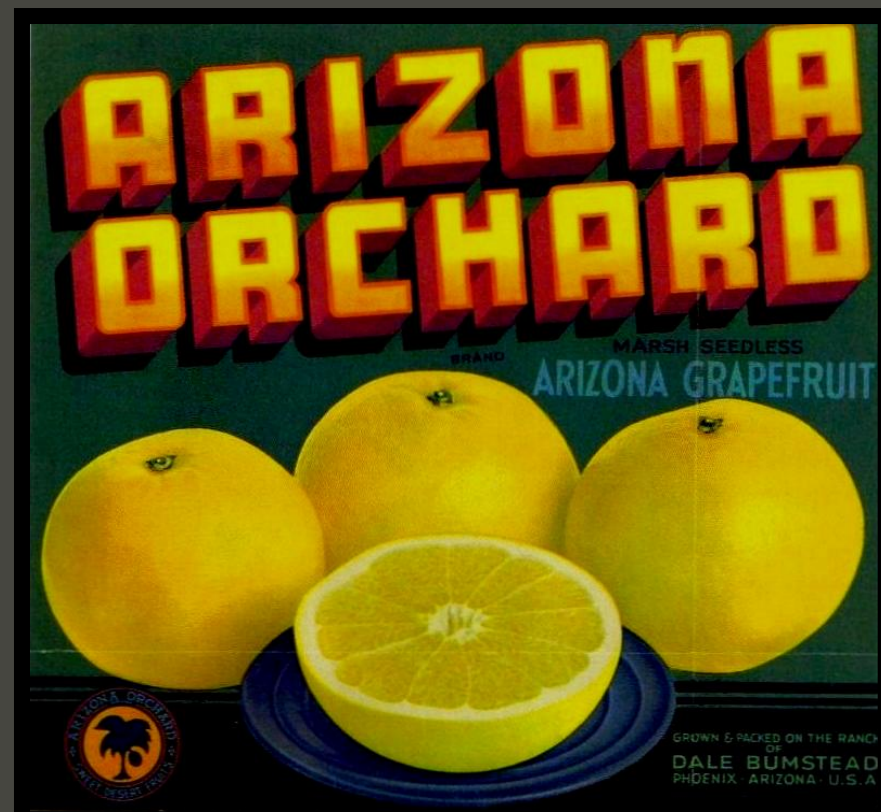
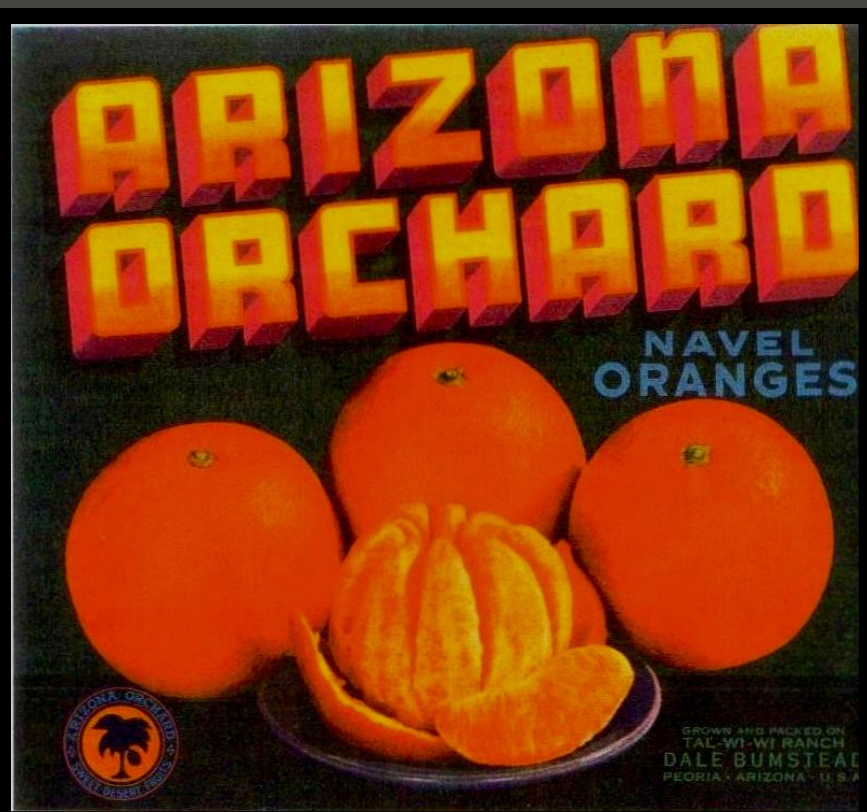


Trucks and Farm Equipment  
Tal-Wi-Wi Ranch  
Circa 1950's

**“Dale” Brand  
By Barton “Dale” Bumstead  
(Circa - 1940’s)**



*“Arizona Orchard” Brand  
By Dale Bumstead  
(Circa - 1930’s)*



*Side View of Mesa Citrus Growers Packing House  
Broadway Road Looking West  
Mesa, Arizona (Circa - 1930's)*



*Front View of Mesa Citrus Growers Packing House  
Broadway Road Looking North  
Mesa, Arizona (Circa - 1930's)*



*“Four A” Brand  
“Red Z” Brand  
By Mesa Citrus Growers  
(Copyright - 1938)*



*A Snow Storm in Mesa, AZ  
Chauncy Harvey McKellips  
Owner - McKellips Citrus Groves  
(1937)*



*Harvest Time*  
*Joel Clair Franks*  
*Manager - McKellips Citrus Growers*  
*(Circa - 1930's)*



*Harvest Time*  
*A Citrus Harvest Crew*  
*for McKellips Citrus Groves*  
*(Circa - 1930's)*



*“Arizonan” Brand  
“Zona Mesa” Brand  
By McKellips Citrus Growers  
(Circa - 1930’s/1940’s)*



*“Fair Island” Brand  
 “McKellips” Brand  
 By McKellips Citrus Growers  
 (Circa - 1930’s/1940’s)*



*“Sun Devil” Brand by Consolidated Citrus Growers  
Printed by Western Lithograph Co.  
(1952)*



DISTRIBUTED BY  
**AMERICAN FRUIT GROWERS INC.**  
LOS ANGELES, CALIF.

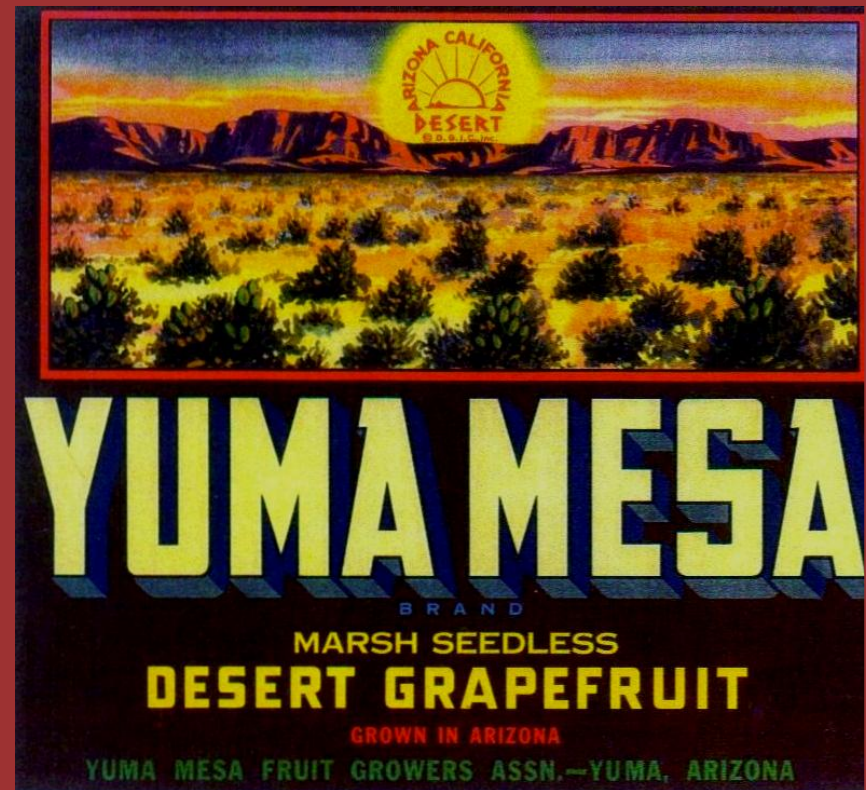
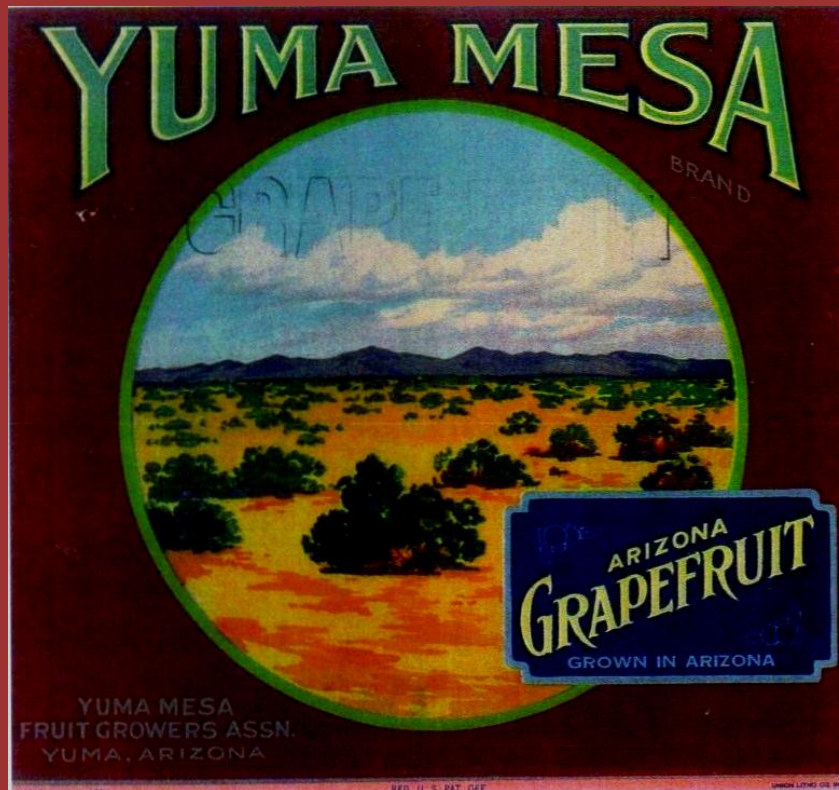
PRODUCE OF U.S.A.

PACKED AND SHIPPED BY  
**CONSOLIDATED CITRUS GROWERS**  
MESA, ARIZONA

*“SPARKY” – the Sun Devil  
(Adopted 1955)  
By Bert Anthony  
For Walt Disney Studios*



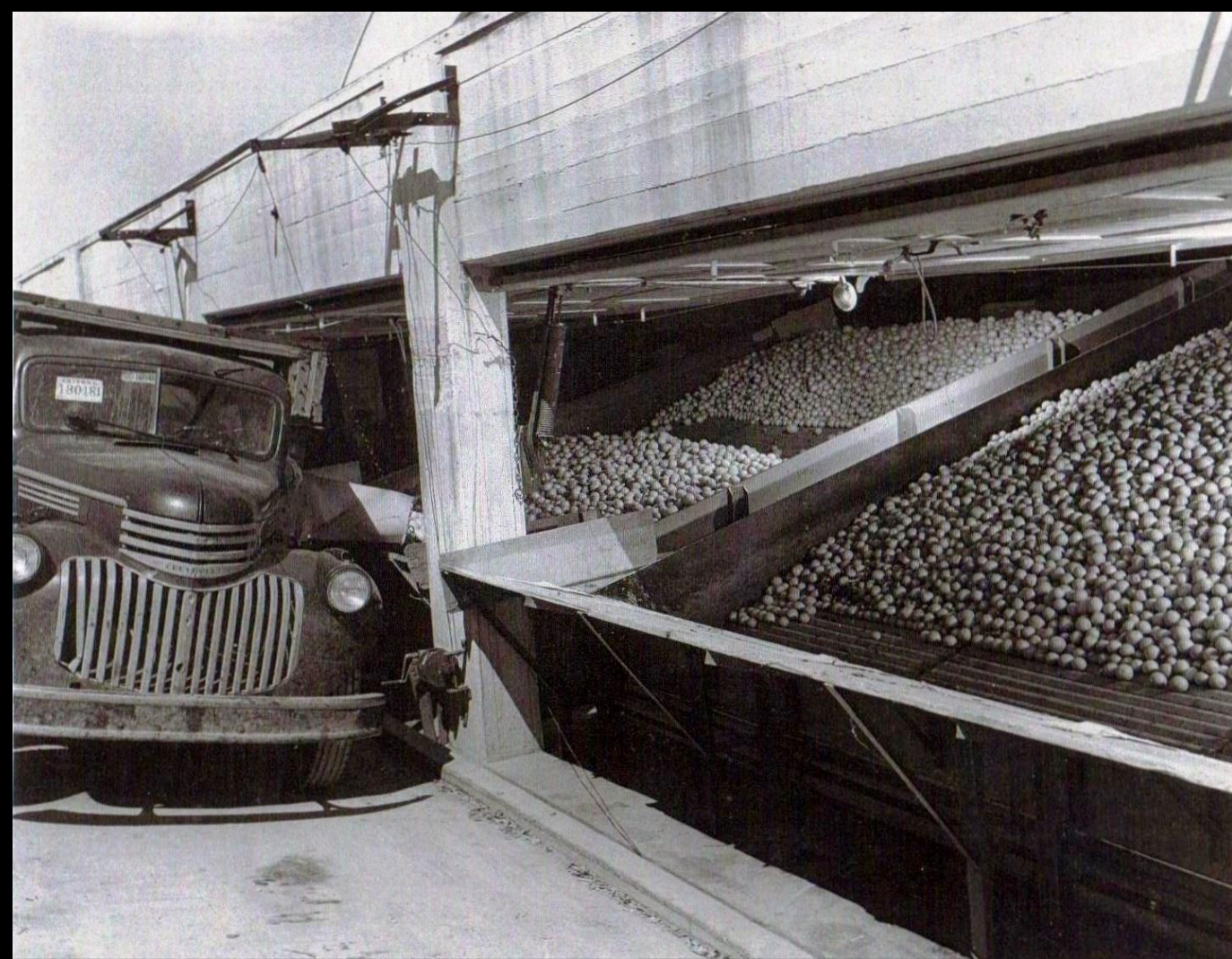
*“Yuma Mesa” Brand  
By Yuma Mesa Fruit Growers Assn.  
(Circa - 1930’s/1940’s)*



*Yuma Mesa Fruit Growers Assn. Packing House  
Unloading Dock  
(Early 1940's)*



*Yuma Mesa Fruit Growers Assn.  
Unloading Dock  
(Early 1940's)*



*Yuma Mesa Fruit Growers Assn.  
Interior View  
Filling Citrus Crates by Hand*



*Yuma Mesa Fruit Growers Assn.  
Interior View  
Wrapping Oranges By Hand*



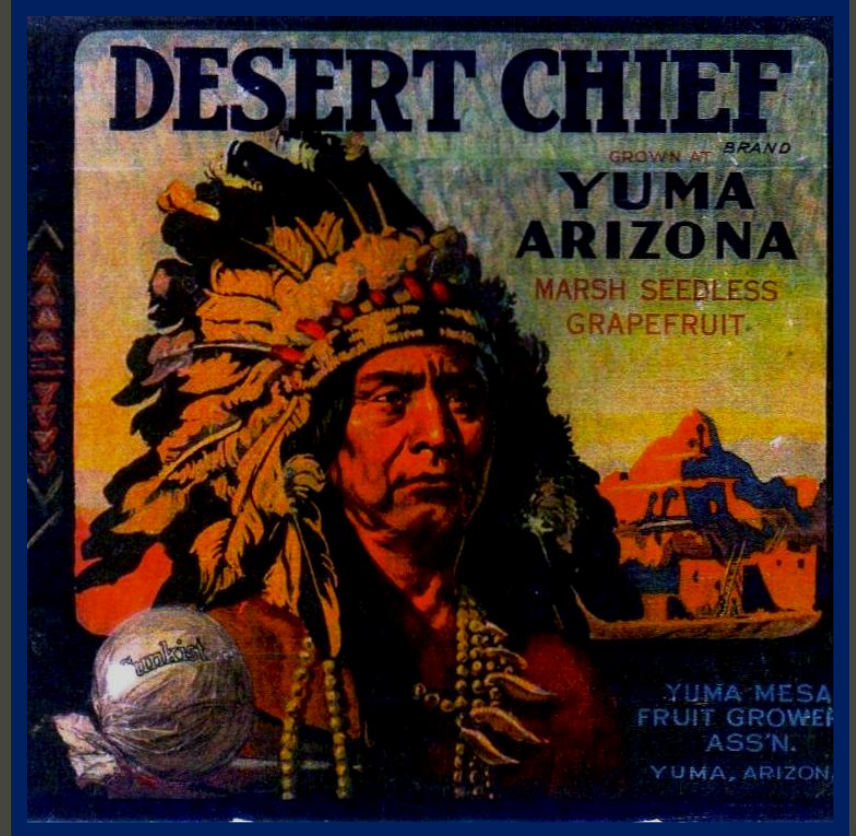
*Yuma Mesa Fruit Growers Assn.  
Interior View  
Packed Orange Crates are Talled By Hand*



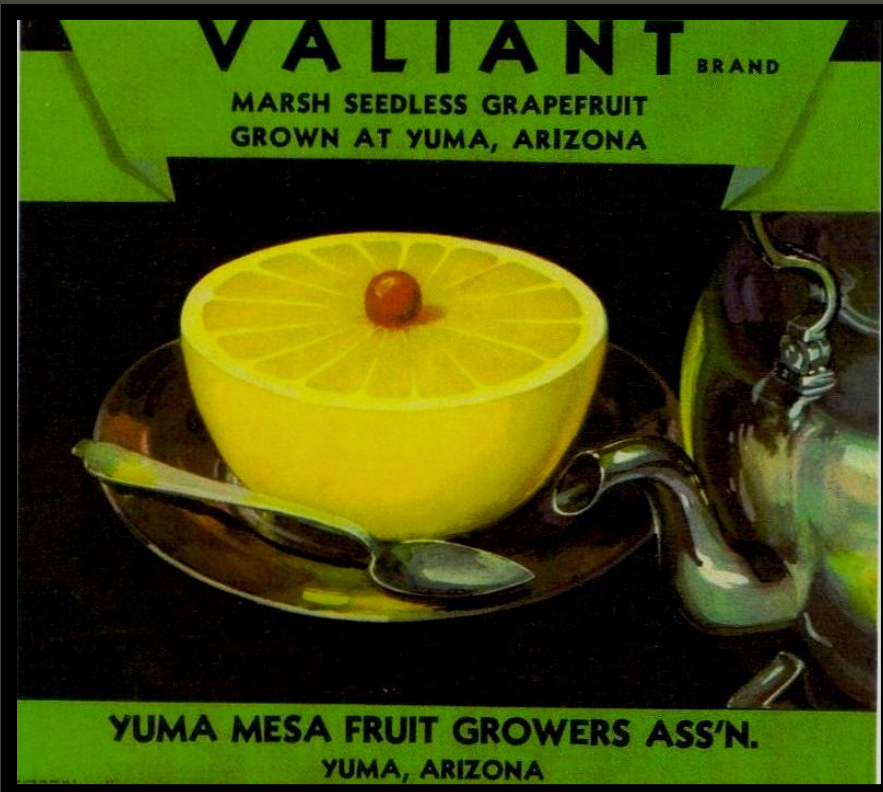
*Yuma Mesa Fruit Growers Assn.  
Railcar Loading Dock  
Packed Orange Crates Are Loaded By Hand*



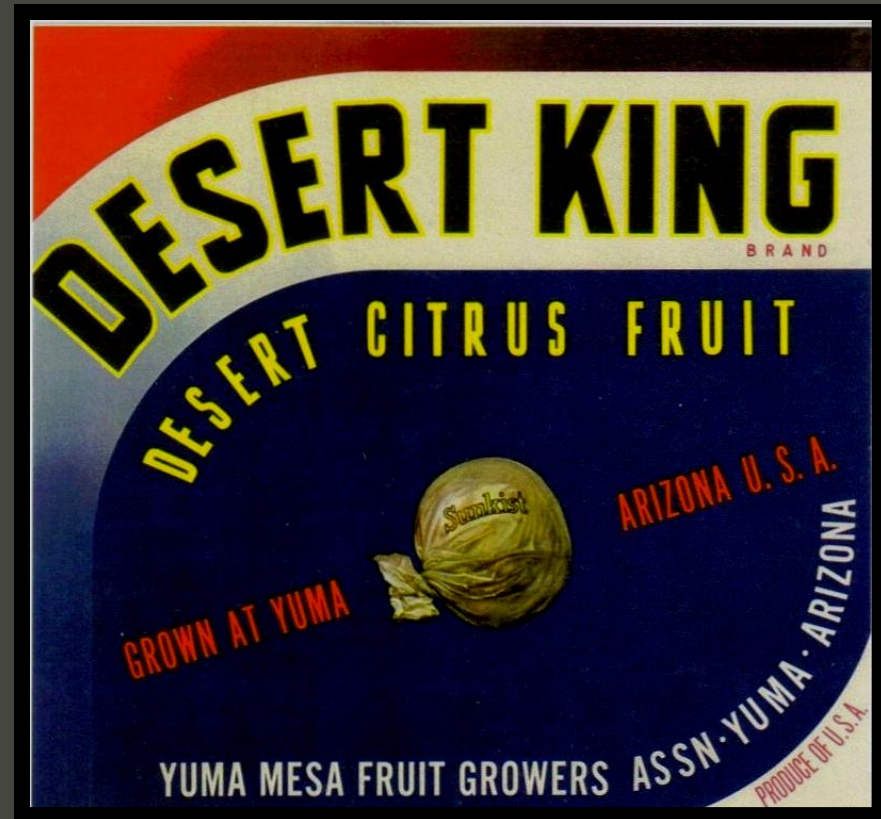
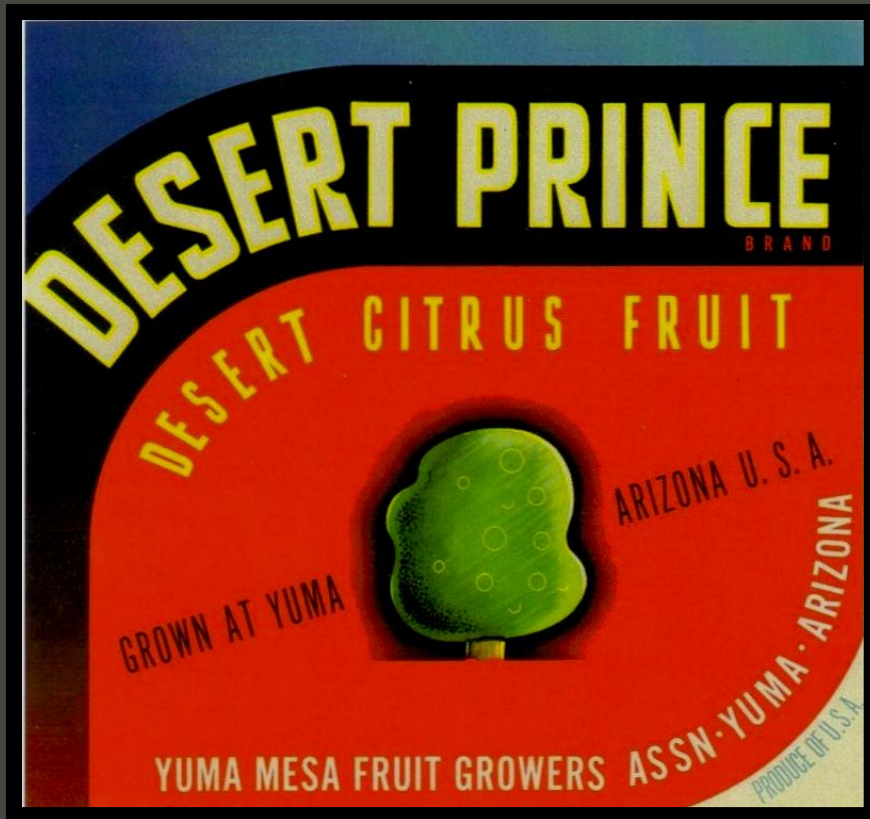
*“Desert King” Brand  
“Desert Chief” Brand  
By Yuma Mesa Fruit Growers Assn.  
(Circa - 1930’s/1940’s)*



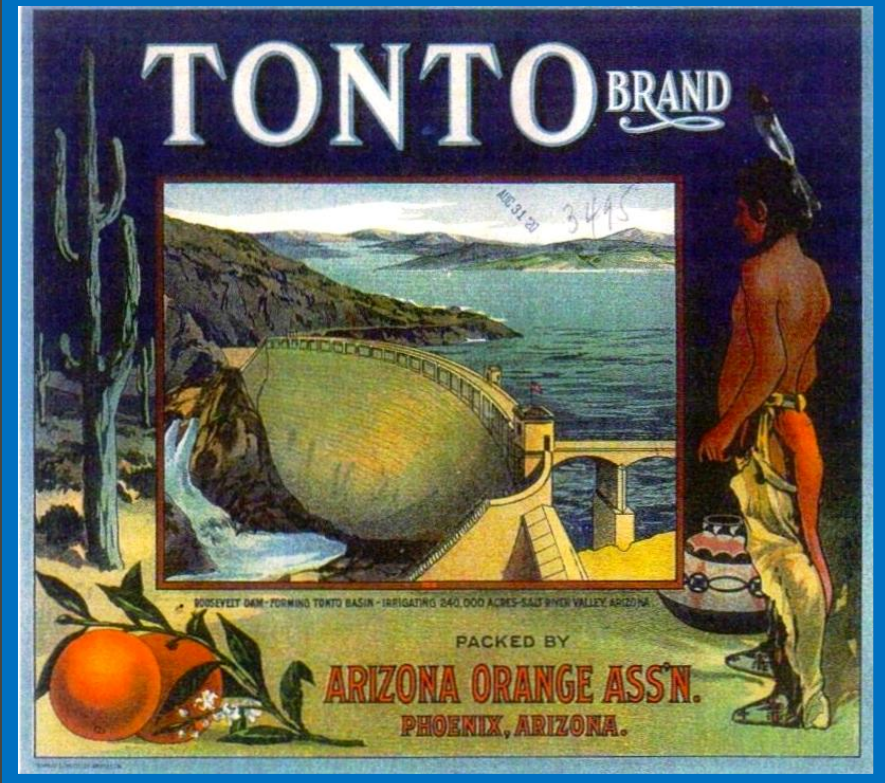
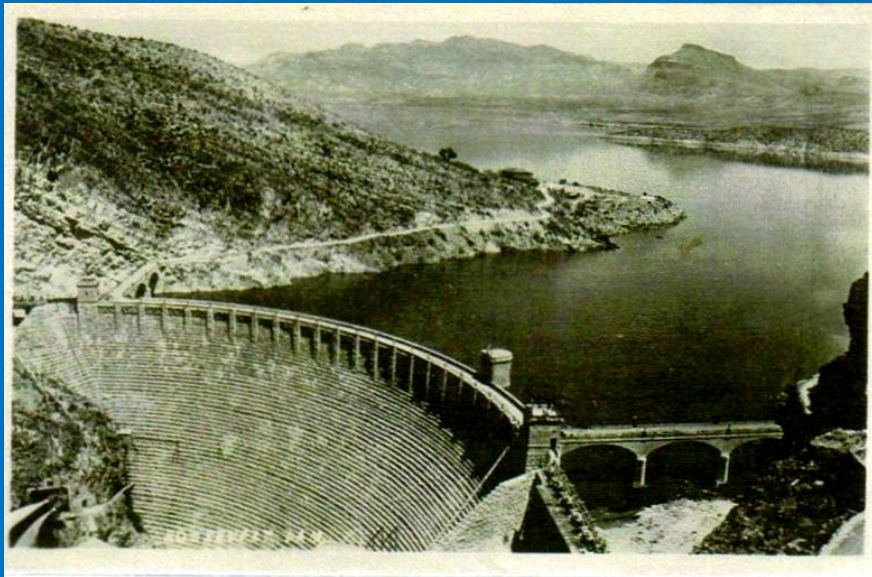
*“Valiant” Brand*  
*“Sweetest of the Sweet” Brand*  
 By Yuma Mesa Fruit Growers Assn.  
 (Circa - 1930’s)



*“Desert King” Brand  
“Desert Prince” Brand  
By Yuma Mesa Fruit Growers Assn.  
(circa - 1950’s)*



*Citrus & Saguaros*  
*Roosevelt Dam Post Card*  
*"Tonto" Brand*  
*(Circa - 1920's)*



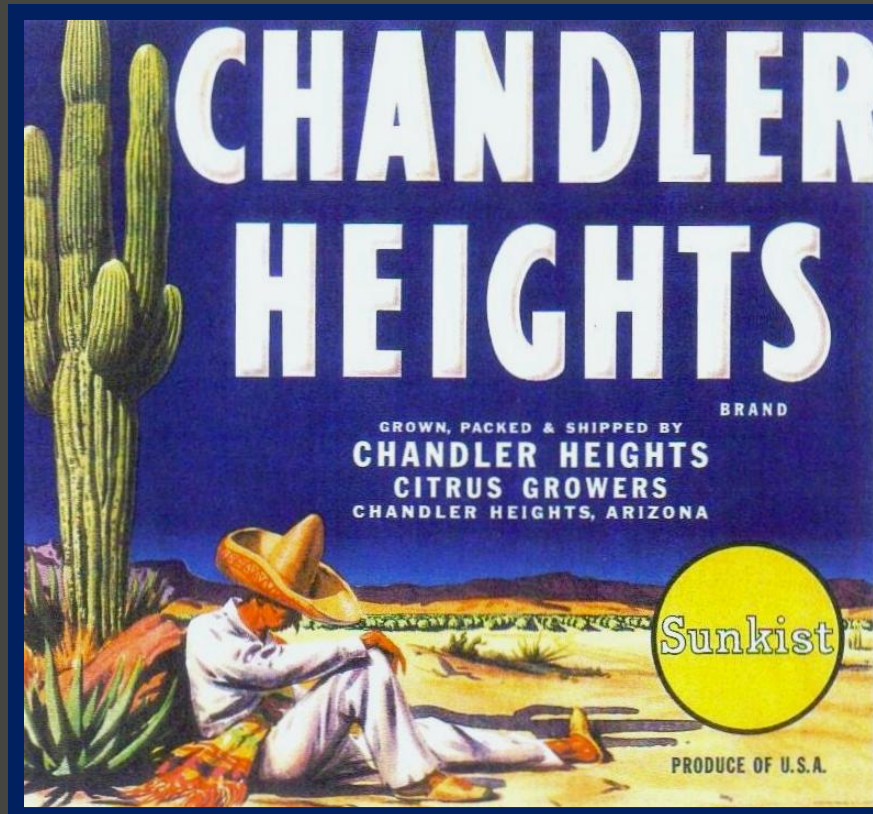
*Citrus & Saguaros*  
*Camelback Mtn. Postcard*  
*"Tempecco" Groves Brand*  
*(Circa - 1940's)*



*Citrus & Saguaros - Stereotypes*  
*Talk o'the West Brand*  
*(Circa - 1940's)*



*Citrus & Saguaros – Stereotypes*  
*“Chandler Heights” Brand*  
*“Desert Harmony” Brand*  
*(Circa - 1940’s)*



*World War Two Era Pin-Up Art*  
*“Arizona Maid” Brand*  
*“Miss Soft Ball” Brand*  
*(Circa - 1940’s)*



*End of Presentation*

*“Citrus and Saguaros”*

*Thank You!*